

# IKEA Print Application - Hybrid Model S

Supplier Setup guide

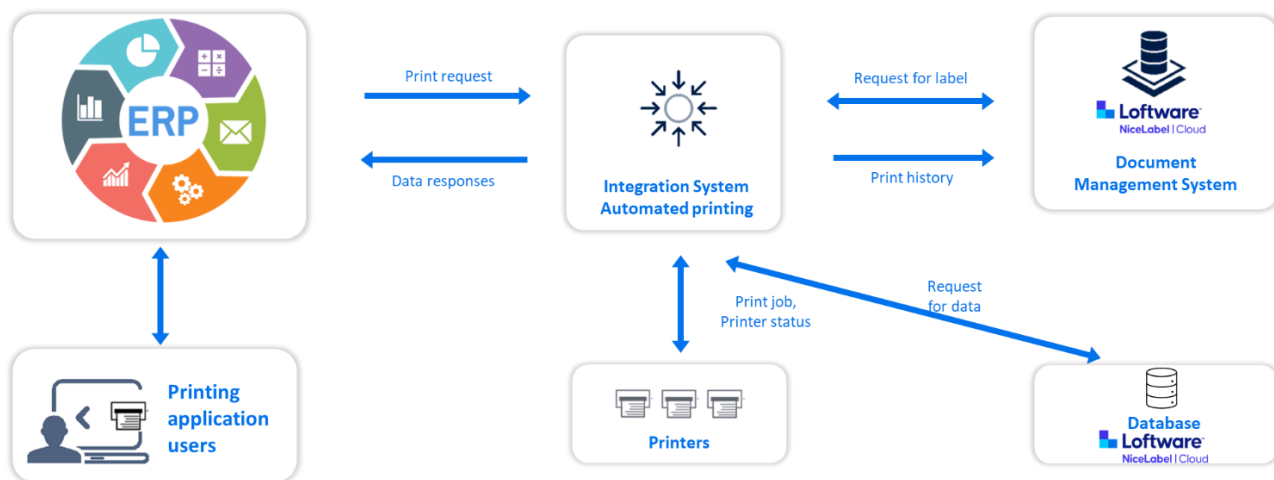
©Loftware 2024

# Purpose

In September 2022 IKEA introduced IKEA Print Application in Cloud. That enables IKEA suppliers to print dynamic labels with GS1 Datamatrix barcode. All data for labels and printing application are held in Cloud.

With this hybrid (S) model, printing will be done on local computer of supplier, triggered from supplier's ERP/WMS system, with data for labels still fetched from Cloud database.

# Topology



Topology: Main components of Hybrid S model and their relations

# Installation

## Requirements

To use IKEA Hybrid model S solution, an Internet connection is required to download the installation program and the setup file.

To install the solution Windows computer is required with following [system requirements](#) (see section **NiceLabel10** for HW requirements and section **NiceLabel Cloud** for connection to Cloud environment).

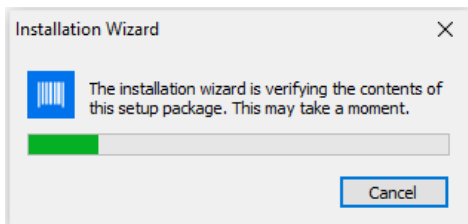
Please note that for access to:

- IKEA cloud **Product database** located on <https://ikea.onnicelabel.com> traffic on TCP ports 1433 and 1434 have to be allowed
- Service for **Compliance icons** traffic to server <http://20.224.60.229> on TCP port 56426 have to be allowed.

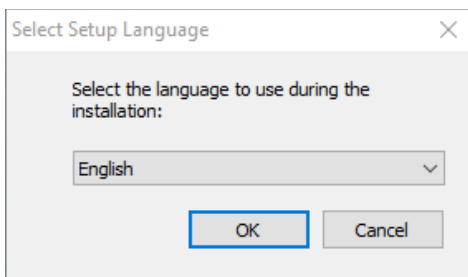
## NiceLabel Automation Installation

Note: Installation package contains setup for 3 NiceLabel products. During installation choose only NiceLabel Automation module (at step 6). To install NiceLabel Automation module go to <https://ikea.onnicelabel.com/dashboard/Administration/Download/DownloadDesktopClient> and download installation package.

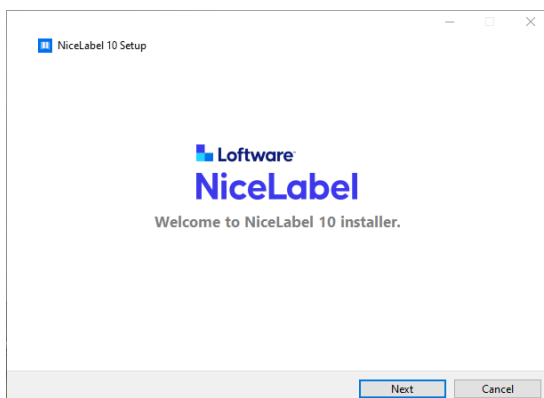
1. After download, run the installation file. Installer verifies the installation package content.



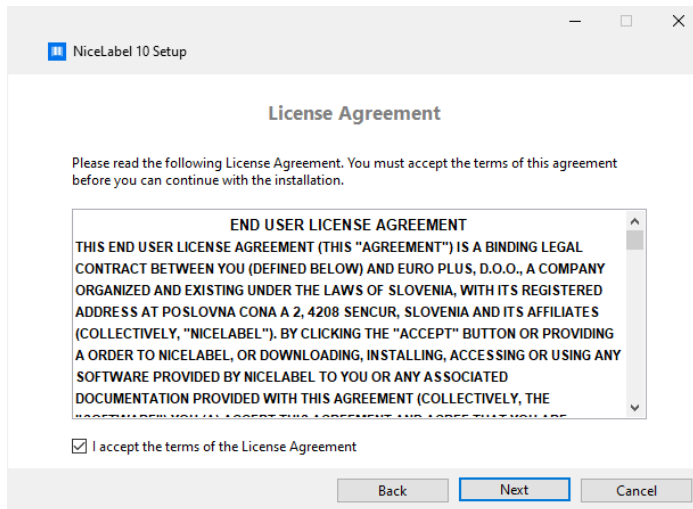
2. Select installation language from the drop-down list and click *OK*



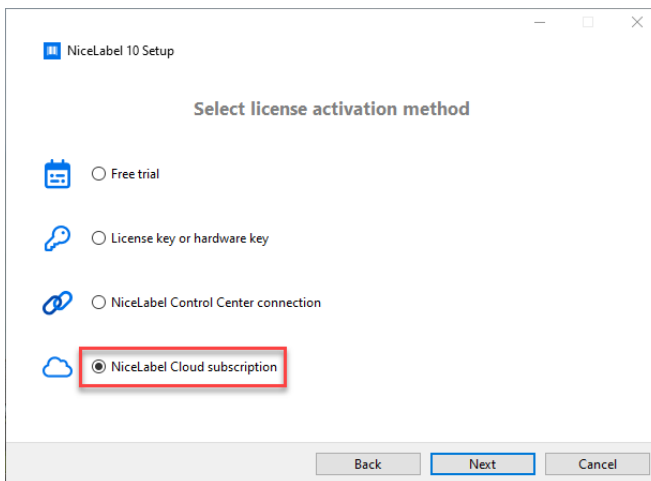
3. NiceLabel Setup dialog window opens automatically. Click *Next*.



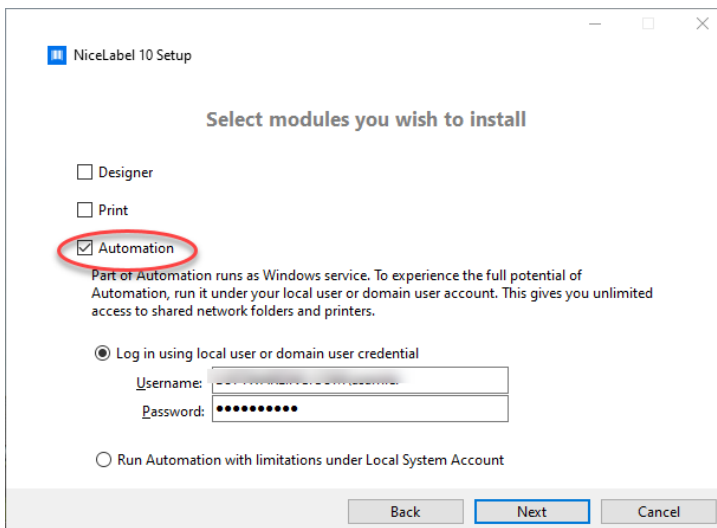
- After accepting the license agreement, click *Next* to continue.



- For the license activation method select *NiceLabel Cloud subscription*.



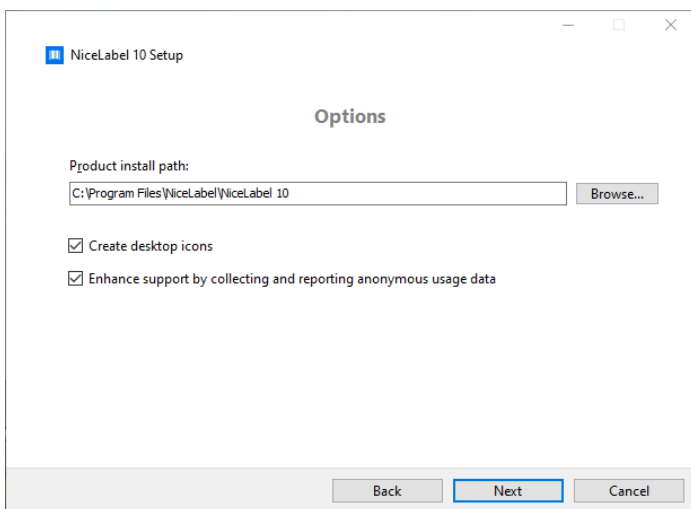
- When selecting modules, only select Automation (unselect Print and Designer).



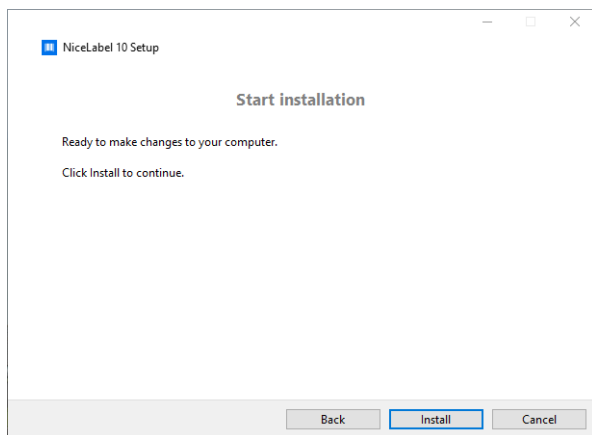
Select how you are going to run Automation service. Type in the account under which the Windows services are going to run. Make sure you use an account with access to local printer drivers.

*NOTE: We recommend using standard or administrative user accounts. The Local System Account has limited access to network shared files and printers. It requires additional work when setting up printers to make them work correctly. It's also recommended that "change password every x" policy does not apply to that account.*

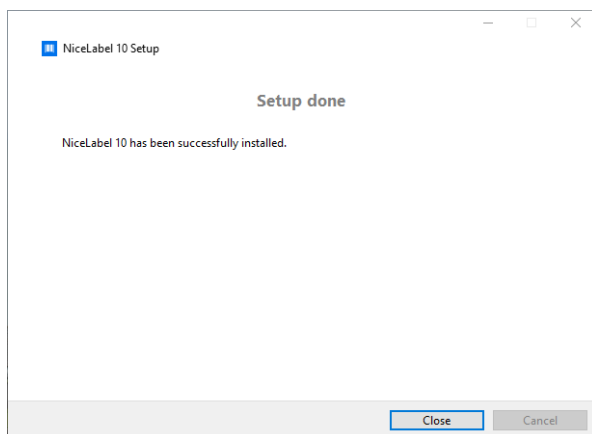
- Define the installation path and decide if you want to share your usage data with NiceLabel or not. Anonymous usage data helps NiceLabel improve the applications and therefore increase your productivity.



- The package is now ready to install, click *Install* to continue.



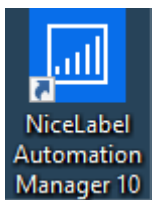
- Once the set up is complete, click *Close*.



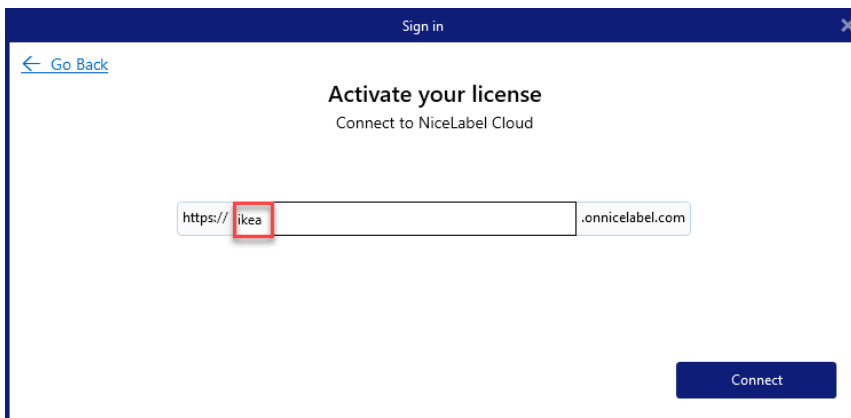
# Activation

The first time NiceLabel Automation is run, license activation is required.

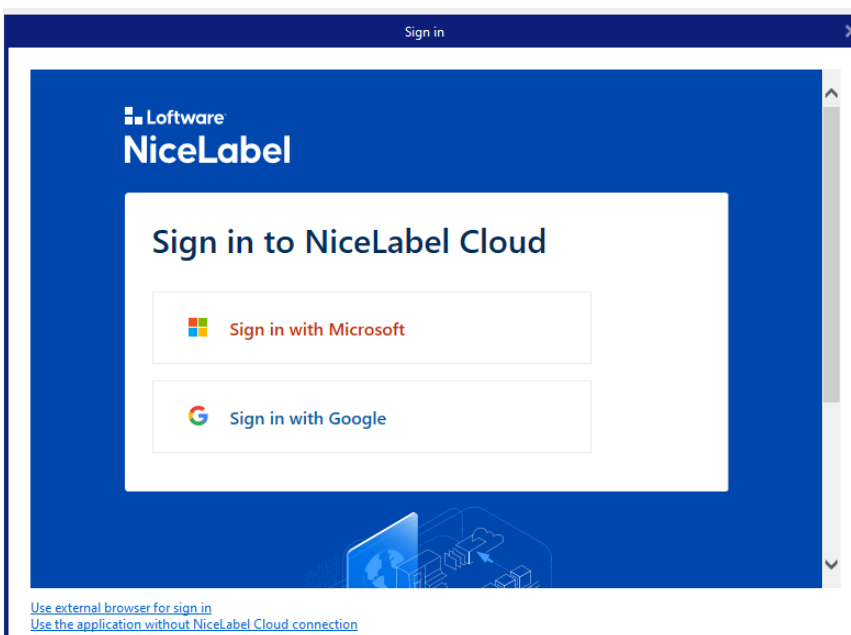
1. Run NiceLabel Automation Manager (ideally from desktop icon).



2. A sign in window will appear. Type (**ikea**) for NiceLabel Cloud location and click **Connect**.



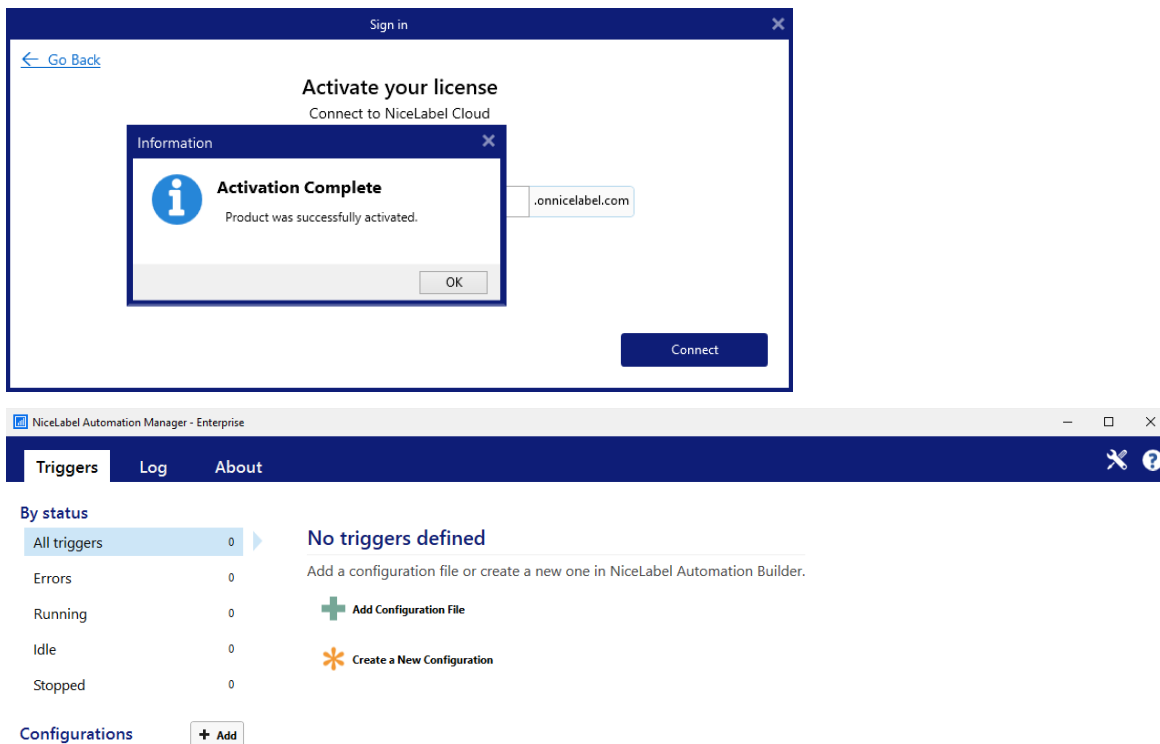
3. Sign into your label cloud using the Microsoft account provided by IKEA.



Note: If this is the first time you have used this account you may be required to change your password.

Note: in case that you will experience issues during Sign in you could choose Use external browser for sign in, which will open the Internet browser where you will provide the account credentials.

- After a few seconds the software will activate, click *OK* and the Automation Manager will open.

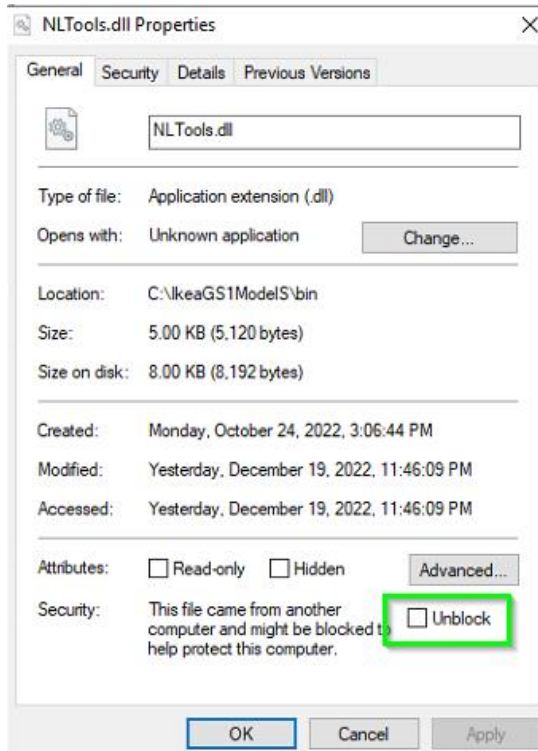


- Leave the Automation Manager open and move on to the next stage (file download).

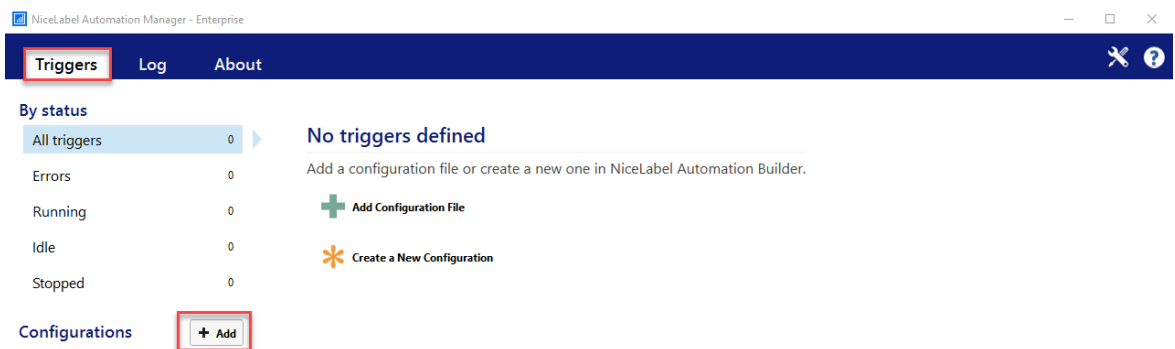
# Automation configuration file download

For installation of triggers which are processing the print requests a configuration file is required, which is downloaded from NiceLabel.

1. Download the IkeaGS1ModelS.zip setup file from <https://ikea.onnicelabel.com:8080/Downloads/IkeaGS1ModelS.zip>
2. Unzip file to a suitable folder (suggested location is root of C drive "C:").
3. Open bin open properties of both dll files and make sure they are not locked.  
If there is a security message like in the picture below, check Unlock box and Apply.

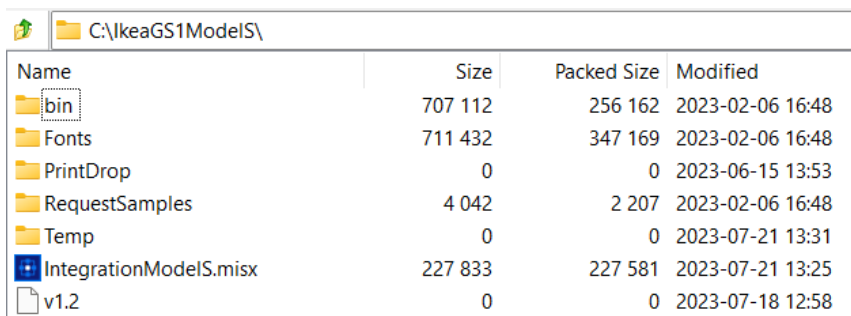


4. From Automation Manager click +Add to add a configuration file (make sure you are on Triggers tab).

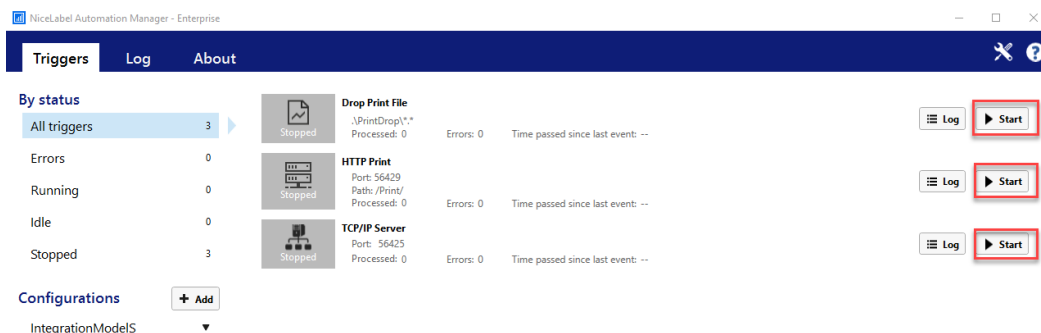




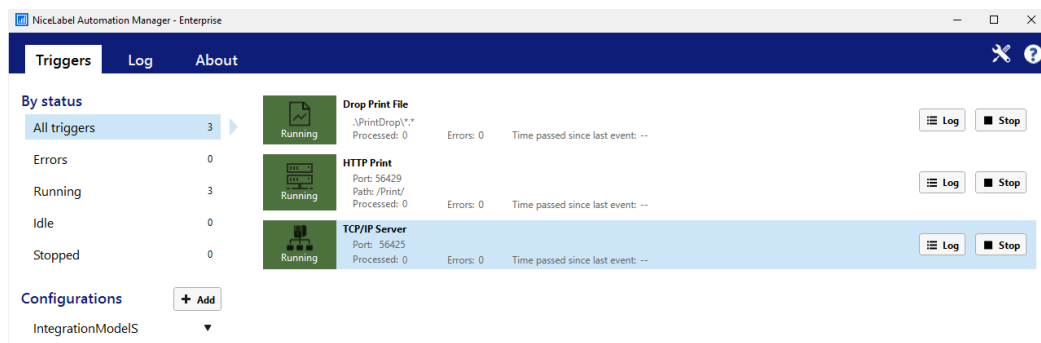
- A file browser window will open. Browse to the "C:\IkeaGS1Models" folder (or your chosen unzip folder). From here run select the "IntegrationModelS.misx" file.



- 3 triggers will now be in Automation Manager. The triggers are not running. Click each *Start* button in turn and the triggers will start.



- All triggers are now running and you may close Automation Manager.



## Printer drivers

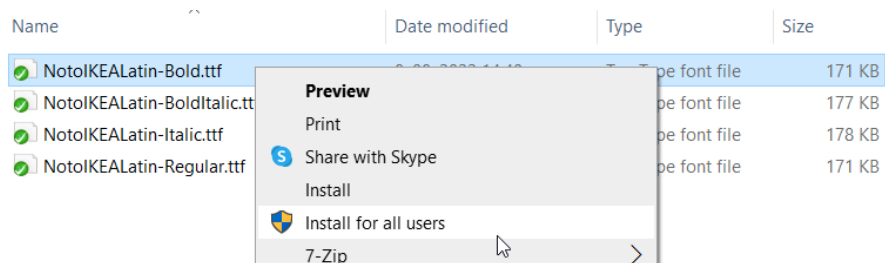
For optimal printing results we are suggesting use of native NiceLabel printer drivers which are available on Loftware webpage <https://drivers.loftware.com/>.

Instructions for printer driver installations are available here <https://help.nicelabel.com/hc/en-001/articles/4405114809745-Installing-NiceLabel-Printer-Drivers>

## Installation of Fonts

For correct printing of labels font family Noto IKEA have to be installed on computer where Automation manager is running. Noto IKEA fonts (4 files) are included in Hybrid S download package <https://ikea.onnicelabel.com:8080/Downloads/IkeaGS1ModelS.zip>.

Navigate to folder where you unzip the IkeaGS1ModelS.zip file (suggested location was root of C drive "C:"). Open folder Fonts, select the font file, do right click and select *Install for all users*. Repeat for all 4 files.



# Solution flow description

Supplier will, from their ERP/EMS/WMS or any other system used for label printing, provide print request in any of below-mentioned formats. Print request can be sent in different ways (as file drop in specific folder, HTTP request (REST) or TCP/IP call). Print request will be sent to Loftware Integration System (NiceLabel Automation application) which will process the request.

Loftware Integration System will according to values in XML or JSON fetch correct data for label from IKEA Cloud product database, combine this with label template (taken from IKEA Cloud Document Management System) and print label to printer defined in in XML/JSON. Print request can also have some other settings defined which will help control printing.

## Print request Data Format

There are two predefined data formats possible. XML and JSON. Both should follow predefined structure with some nodes as mandatory and some optional.

### HEADER:

- PRINT: True or False (Default: True)
- **PRINTER\_NAME\***: Name of the printer you will use to print IKEA labels. It must be installed with the same name on the computer where Automation trigger is running
- **QUANTITY\***: numeric value between 1 and 9999, UNLIMITED for use in marking printers (store and recall)
- PRINT\_JOB\_NAME: String value describing current print job (Default: "Label name")
- ROTATED: True or False (Default: False)
- VERTICAL\_COUNT: numeric value between 1 and 999 (Default: 1)
- GAP: number between 0 and 99 (Gap is not applied to the print if it is not defined)
- MARGINS (TOP, BOTTOM, LEFT and RIGHT): number between 0 and 99
- ORIENTATION: Landscape or Portrait (Default: Landscape)
- PREVIEW: True or False (Default: False). Please note that response with image of the label is possible only through HTTP trigger.
- PREVIEW\_FORMAT: Options JPEG, PNG or BMP (Default: JPEG)
- ENABLECUTTER: Enable cutter functionality: Cut after every label, True or False (Default: False)
- DISABLE\_VARIANT\_SIZE: Possibility to disable dynamic label size. Use it for marking printers for printing proper size of the label (Default: False)

### DATA:

- **SUPPLIER\_CODE\***: Supplier code
- **DOCNO\***: Document number

Docno	<p>This is a number in which the document gets identified</p> <p>This is running number which is displayed in PDOC after 'PI'</p>	318123	<p>AI(240)00000000000000</p> <p>AI(13)000000</p> <p>00-00-00 (YY-MM-DD)</p> <p>PI-318123 2</p> <p>IKEA of Sweden AB</p> <p>SE - 34381 Älmhult</p> <p>© Inter IKEA Systems B.V. 2021</p>
-------	---	--------	---

- **DOCVERSIONNO\***: Document version number

DocVersionNo	This is a unique version number against the document. This can be seen in PDOC after docno	2	AI(240)00000000000000 AI(13)000000 00-00-00 (YY-MM-DD) PI-318123-2 IKEA of Sweden AB SE - 34381 Älmhult © Inter IKEA Systems B.V. 2021
--------------	--	---	---

- CPN: Consumer Package Number required in case of CP label type. Empty value in case of MP, PI label type
- **DATESTAMP\***: Date stamp in format yyyyMMdd
- **PREFIX\***: string value max 5 chars. If not used, value should be empty
- **SUFFIX\***: string value max 5 chars If not used, value should be empty
- SECTION: Possibility to select which Section to print if label includes Sections. Options "Complete label", "Only static information" and "Only data matrix and date" (Default: Complete label)
- **USER\***: Name of the user that triggered the job
- DATAMATRIXSIZE: Possibility to select which Datamatrix size to print if label supports it (1R20-COA,IDA,NUA or 1R35-COA,IDA,NUA). Options "Square" or "Rectangle". (Default: empty)
- COLORDOTSECTION: Possibility to select which options to print if label includes Color dot. Options "Show color dot with number", "Show color dot" and "Hide color dot" (Default: Show color dot with number)
- NUMBERSECTION: Possibility to hide number if CPN>1, Options "Show number" and "Hide number" (Default: Show number)
- MERGED\_LABEL: Possibility to print Identification label with additional LCI information as merged label. Name in the tag should correspond to name set during Label mapping.  
Please note that for printing Merged label first the Label Mapping should be performed in IPA web printing application. Read the section Merged Labels in [IPA Supplier User guide](#) for detailed instructions.
- LCIDATE: LCI (packaging) date stamp in format yyyyMMdd printed on merged label in bottom right corner. If during Label mapping *Show date stamp* was selected then LCI/Packaging date have to be provided for printing. See section Merged Labels -> Label printing in [IPA Supplier User guide](#) for details.

\* Mandatory fields for all label templates are marked **BOLD**

## Sample XML/JSON requests

Below samples are provided for supplier support during creation of print request(s). It's suggested that label is always previewed in IPA print application where all required tags in print request for DATA section are visible in the middle part of the screen (marked red).

**Sample 1: Prefix, Datestamp, Suffix, Datamatrixsize, Section, Colordotsection (Numbersection is not required since it's greyed out)**

1	20473362	PAX NN slid drs prf frm w rail 150x201 white AP	1R20-COA.IDADM	PI-688944-1	Adhesive	Implemented
1	40497734	SKYTTA slid door frm 102x196 black	1R20-COA.IDBDM	PI-700151-1	Adhesive	Rel To Sup

Prefix:  Date: 02.02.2024 Suffix:  Data Matrix: Square Product information: Complete label Color dot: Show color dot with number Number: Show number Preview mode: Overlay

Label Preview:  Show label size

**Sample XML Print action**

```
<?xml version="1.0"?>
<LABEL>
  <HEADER>
    <PRINTER_NAME>ZEBRA ZT410-300dpi ZPL</PRINTER_NAME>
    <QUANTITY>1</QUANTITY>
  </HEADER>
  <DATA>
    <SUPPLIER_CODE>22333</SUPPLIER_CODE>
    <DOCNO>688944</DOCNO>
    <DOCVERSIONNO>1</DOCVERSIONNO>
    <PREFIX></PREFIX>
    <DATESTAMP>20240202</DATESTAMP>
    <SUFFIX></SUFFIX>
    <DATAMATRIXSIZE>Square</DATAMATRIXSIZE>
    <SECTION>Complete label</SECTION>
    <COLORDOTSECTION>Show color dot with number</COLORDOTSECTION>
    <USER>User1</USER>
  </DATA>
</LABEL>
```

**Sample JSON Print action**

```
{
  "LABEL": {
    "HEADER": {
      "PRINTER_NAME": "ZEBRA ZT410-300dpi ZPL",
      "QUANTITY": "1",
    },
    "DATA": {
      "SUPPLIER_CODE": "22333",
      "DOCNO": "688944",
      "DOCVERSIONNO": "1",
      "PREFIX": "",
      "DATESTAMP": "20221020",
      "SUFFIX": "123",
      "DATAMATRIXSIZE": "Square",
      "SECTION": "Complete label",
      "COLORDOTSECTION": "Show color dot with number",
      "USER": "User1"
    }
  }
}
```

**Sample 2: Prefix, Datestamp, Suffix, Section (Colordotsection and Numbersection are not required since they are greyed out)**

1	50506318	STRAUMEN N mirror door 60x120 mirror glass	1R10-IDADM	PI-625446-1	Accepted
1	20525691	LARKOLLEN handle 60 white 2-p	1R10-IDADM	PI-625476-1	Accepted

Prefix:  Date: 02.02.2024 Suffix:  Product information: Complete label Color dot: Show color dot with number Number: Show number Preview mode: Overlay

Label Preview:  Show label size

**Sample XML Print action**

```
<?xml version="1.0"?>
<LABEL>
  <HEADER>
    <PRINTER_NAME>ZEBRA ZT410-300dpi ZPL</PRINTER_NAME>
    <QUANTITY>1</QUANTITY>
  </HEADER>
  <DATA>
    <SUPPLIER_CODE>22333</SUPPLIER_CODE>
    <DOCNO>625446</DOCNO>
    <DOCVERSIONNO>1</DOCVERSIONNO>
    <PREFIX></PREFIX>
    <DATESTAMP>20240202</DATESTAMP>
    <SUFFIX></SUFFIX>
    <SECTION>Complete label</SECTION>
    <USER>User1</USER>
  </DATA>
</LABEL>
```

**Sample JSON Print action**

```
{
  "LABEL": {
    "HEADER": {
      "PRINTER_NAME": "ZEBRA ZT410-300dpi ZPL",
      "QUANTITY": "1",
    },
    "DATA": {
      "SUPPLIER_CODE": "22333",
      "DOCNO": "625446",
      "DOCVERSIONNO": "1",
      "PREFIX": "",
      "DATESTAMP": "20221020",
      "SUFFIX": "123",
      "SECTION": "Complete label",
      "USER": "User1"
    }
  }
}
```

### Sample 3: Prefix, Datestamp, Suffix, Datamatrixsize, Section, Numbersection, CPN\* (Colordotsection is not required since it's greyed out)

1	90480401	KVISTBRO stor tbl 44 black	1R20-IDADM,NUA	PI-576348-1	Accepted
2	90480401	KVISTBRO stor tbl 44 black	1R20-IDADM,NUA	PI-576348-1	Accepted

Prefix:  Date: 02.02.2024 Suffix:  Data Matrix: Square Product information: Complete label Color dot: Show color dot with number Number: Show number Preview mode: Overlay

Label Preview:  Show label size

#### Sample XML Print action

```
<?xml version="1.0"?>
<LABEL>
  <HEADER>
    <PRINTER_NAME>ZEBRA ZT410-300dpi ZPL</PRINTER_NAME>
    <QUANTITY>1</QUANTITY>
  </HEADER>
  <DATA>
    <SUPPLIER_CODE>22333</SUPPLIER_CODE>
    <DOCNO>576348</DOCNO>
    <DOCVERSIONNO>1</DOCVERSIONNO>
    <CPN>1</CPN>
    <PREFIX></PREFIX>
    <DATESTAMP>20240202</DATESTAMP>
    <SUFFIX></SUFFIX>
    <DATAMATRIXSIZE>Square</DATAMATRIXSIZE>
    <SECTION>Complete label</SECTION>
    <NUMBERSECTION>Show number</NUMBERSECTION>
    <USER>User1</USER>
  </DATA>
</LABEL>
```

#### Sample JSON Print action

```
{
  "LABEL": {
    "HEADER": {
      "PRINTER_NAME": "ZEBRA ZT410-300dpi ZPL",
      "QUANTITY": "1",
    },
    "DATA": {
      "SUPPLIER_CODE": "22333",
      "DOCNO": "576348",
      "DOCVERSIONNO": "1",
      "CPN": "1",
      "PREFIX": "",
      "DATESTAMP": "20221020",
      "SUFFIX": "123",
      "DATAMATRIXSIZE": "Square",
      "SECTION": "Complete label",
      "NUMBERSECTION": "Show number",
      "USER": "User1"
    }
  }
}
```

\* This article contains two packages and CPN is required since combination of Docno + Docversionno returns two hits. If Show number in Number dropdown is available CPN is always required.

### Sample 4: Prefix, Datestamp, Suffix, Section

1	40512640	SKYTТА rail f slid door fm 2 tracks white	1C70-IDBDM	PI-651398-1	Accepted
1	20512641	SKYTТА rail f slid door fm 2 tracks black	1C70-IDBDM	PI-651421-1	Adhesive Accepted

Prefix:  Date: 02.02.2024 Suffix:  Product information: Complete label Preview mode: Overlay

Label Preview:  Show label size

#### Sample XML Print action

```
<?xml version="1.0"?>
<LABEL>
  <HEADER>
    <PRINTER_NAME>ZEBRA ZT410-300dpi ZPL</PRINTER_NAME>
    <QUANTITY>1</QUANTITY>
  </HEADER>
  <DATA>
    <SUPPLIER_CODE>22333</SUPPLIER_CODE>
    <DOCNO>651398</DOCNO>
    <DOCVERSIONNO>1</DOCVERSIONNO>
    <PREFIX></PREFIX>
    <DATESTAMP>20240202</DATESTAMP>
    <SUFFIX></SUFFIX>
    <SECTION>Complete label</SECTION>
    <USER>User1</USER>
  </DATA>
</LABEL>
```

#### Sample JSON Print action

```
{
  "LABEL": {
    "HEADER": {
      "PRINTER_NAME": "ZEBRA ZT410-300dpi ZPL",
      "QUANTITY": "1",
    },
    "DATA": {
      "SUPPLIER_CODE": "22333",
      "DOCNO": "651398",
      "DOCVERSIONNO": "1",
      "PREFIX": "",
      "DATESTAMP": "20221020",
      "SUFFIX": "123",
      "SECTION": "Complete label",
      "USER": "User1"
    }
  }
}
```

### Sample 5: All possible tags in print request

Sample XML Print action - all tags	Sample JSON Print action - all tags
<pre> &lt;?xml version="1.0"?&gt; &lt;LABEL&gt;   &lt;HEADER&gt;     &lt;PRINT&gt;True&lt;/PRINT&gt;     &lt;PRINTER_NAME&gt;ZEBRA ZT410-300dpi ZPL&lt;/PRINTER_NAME&gt;     &lt;QUANTITY&gt;1&lt;/QUANTITY&gt;     &lt;PRINT_JOB_NAME&gt;PrintJob1&lt;/PRINT_JOB_NAME&gt;     &lt;ROTATED&gt;False&lt;/ROTATED&gt;     &lt;VERTICAL_COUNT&gt;1&lt;/VERTICAL_COUNT&gt;     &lt;GAP&gt;5&lt;/GAP&gt;     &lt;MARGINS&gt;       &lt;TOP&gt;0&lt;/TOP&gt;       &lt;BOTTOM&gt;0&lt;/BOTTOM&gt;       &lt;LEFT&gt;0&lt;/LEFT&gt;       &lt;RIGHT&gt;0&lt;/RIGHT&gt;     &lt;/MARGINS&gt;     &lt;ORIENTATION&gt;Landscape&lt;/ORIENTATION&gt;     &lt;ENABLECUTTER&gt;False&lt;/ENABLECUTTER&gt;     &lt;DISABLE_VARIANT_SIZE&gt;False&lt;/DISABLE_VARIANT_SIZE&gt;     &lt;PREVIEW&gt;False&lt;/PREVIEW&gt;     &lt;PREVIEW_FORMAT&gt;PNG&lt;/PREVIEW_FORMAT&gt;   &lt;/HEADER&gt;   &lt;DATA&gt;     &lt;SUPPLIER_CODE&gt;00000&lt;/SUPPLIER_CODE&gt;     &lt;DOCNO&gt;318123&lt;/DOCNO&gt;     &lt;DOCVERSIONNO&gt;1&lt;/DOCVERSIONNO&gt;     &lt;CPN&gt;1&lt;/CPN&gt;     &lt;DATESTAMP&gt;20221020&lt;/DATESTAMP&gt;     &lt;PREFIX&gt;ABC&lt;/PREFIX&gt;     &lt;SUFFIX&gt;123&lt;/SUFFIX&gt;     &lt;SECTION&gt;Complete label&lt;/SECTION&gt;     &lt;COLORDOTSECTION &gt;Show color dot with number&lt;/COLORDOTSECTION &gt;     &lt;NUMBERSECTION &gt;Show number&lt;/NUMBERSECTION&gt;     &lt;USER&gt;User1&lt;/USER&gt;     &lt;DATAMATRIXSIZE&gt;Square&lt;/DATAMATRIXSIZE&gt;     &lt;MERGED_LABEL&gt;Mapping1&lt;/MERGED_LABEL&gt;     &lt;LCIDATE&gt;20221020&lt;/LCIDATE&gt;   &lt;/DATA&gt; &lt;/LABEL&gt; </pre>	<pre> {   "LABEL": {     "HEADER": {       "PRINT": "True",       "PRINTER_NAME": "ZEBRA ZT410-300dpi ZPL",       "QUANTITY": "1",       "PRINT_JOB_NAME": "PrintJob1",       "ROTATED": "False",       "VERTICAL_COUNT": "1",       "GAP": "5",       "MARGINS": {         "TOP": "0",         "BOTTOM": "0",         "LEFT": "0",         "RIGHT": "0"       },       "ORIENTATION": "Landscape",       "ENABLECUTTER": "False",       "DISABLE_VARIANT_SIZE": "False",       "PREVIEW": "False",       "PREVIEW_FORMAT": "PNG"     },     "DATA": {       "SUPPLIER_CODE": "00000",       "DOCNO": "318123",       "DOCVERSIONNO": "1",       "CPN": "1",       "DATESTAMP": "20221020",       "PREFIX": "ABC",       "SUFFIX": "123",       "SECTION": "Complete label",       "COLORDOTSECTION": "Show color dot with number",       "NUMBERSECTION": "Show number",       "USER": "User1",       "DATAMATRIXSIZE": "Square",       "MERGED_LABEL": "Mapping1",       "LCIDATE": "20221020",     }   } } </pre>

### Sample 6: Preview action (available only via HTTP)

Sample XML Preview action	Sample JSON Preview action
<pre> &lt;?xml version="1.0"?&gt; &lt;LABEL&gt;   &lt;HEADER&gt;     &lt;PRINT&gt;False&lt;/PRINT&gt;     &lt;QUANTITY&gt;1&lt;/QUANTITY&gt;     &lt;ENABLECUTTER&gt;True&lt;/ENABLECUTTER&gt;     &lt;PREVIEW&gt;True&lt;/PREVIEW&gt;     &lt;PREVIEW_FORMAT&gt;PNG&lt;/PREVIEW_FORMAT&gt;   &lt;/HEADER&gt;   &lt;DATA&gt;     &lt;SUPPLIER_CODE&gt;00000&lt;/SUPPLIER_CODE&gt;     &lt;DOCNO&gt;318123&lt;/DOCNO&gt;     &lt;DOCVERSIONNO&gt;1&lt;/DOCVERSIONNO&gt;     &lt;CPN&gt;1&lt;/CPN&gt;     &lt;DATESTAMP&gt;20221020&lt;/DATESTAMP&gt;     &lt;PREFIX&gt;ABC&lt;/PREFIX&gt;     &lt;SUFFIX&gt;123&lt;/SUFFIX&gt;     &lt;USER&gt;User1&lt;/USER&gt;   &lt;/DATA&gt; &lt;/LABEL&gt; </pre>	<pre> {   "LABEL": {     "HEADER": {       "PRINT": "False",       "QUANTITY": "1",       "ENABLECUTTER": "True",       "PREVIEW": "True",       "PREVIEW_FORMAT": "PNG"     },     "DATA": {       "SUPPLIER_CODE": "00000",       "DOCNO": "318123",       "DOCVERSIONNO": "1",       "CPN": "1",       "DATESTAMP": "20221020",       "PREFIX": "ABC",       "SUFFIX": "123",       "USER": "User1"     }   } } </pre>

### Sample 7: Required tags only (label type: MP and PI)

Sample XML Print action - required tags only	Sample JSON Print action - required tags only
<pre> &lt;?xml version="1.0"?&gt; &lt;LABEL&gt;   &lt;HEADER&gt;     &lt;PRINTER_NAME&gt;ZEBRA ZT410-300dpi ZPL&lt;/PRINTER_NAME&gt;     &lt;QUANTITY&gt;1&lt;/QUANTITY&gt;   &lt;/HEADER&gt;   &lt;DATA&gt;     &lt;SUPPLIER_CODE&gt;00000&lt;/SUPPLIER_CODE&gt;     &lt;DOCNO&gt;318123&lt;/DOCNO&gt;     &lt;DOCVERSIONNO&gt;1&lt;/DOCVERSIONNO&gt;     &lt;DATESTAMP&gt;20221020&lt;/DATESTAMP&gt;     &lt;PREFIX&gt;ABC&lt;/PREFIX&gt;     &lt;SUFFIX&gt;123&lt;/SUFFIX&gt;     &lt;USER&gt;User1&lt;/USER&gt;   &lt;/DATA&gt; &lt;/LABEL&gt; </pre>	<pre> {   "LABEL": {     "HEADER": {       "PRINTER_NAME": "ZEBRA ZT410-300dpi ZPL",       "QUANTITY": "1"     },     "DATA": {       "SUPPLIER_CODE": "00000",       "DOCNO": "318123",       "DOCVERSIONNO": "1",       "DATESTAMP": "20221020",       "PREFIX": "ABC",       "SUFFIX": "123",       "USER": "User1"     }   } } </pre>

## Submitting the print request

- Supplier has three options to trigger a print request “HTTP”, “File drop” or “TCP/IP”

All printing logic is contained within “HTTP Print” trigger. If print is triggered using “File Drop” or “TCP/IP” request is simply internally forwarded to HTTP print trigger. Since all logic is contained in HTTP Print trigger it should always be active.

- To trigger a print using HTTP make a request to [http://\[YourServerAddress\]:56429/Print](http://[YourServerAddress]:56429/Print)
  - To trigger a print using TCP/IP make a request to `[YourServerAddress]:56425`
  - To trigger a print using File drop, drop a file in folder “PrintDrop” next to automation configuration file
- If a Print job is triggered with XML format than also the response is returned in XML format, if it is triggered with Json formatted text response is also in Json.
    - Status can be OK or ERROR.
    - Message contains error description in case of Status “ERROR”
    - Preview tag contains Base64 encoded preview if it was requested and in preview format that was specified in the request.

XML response:

```
<Response>
  <Status>OK</Status>
  <Message></Message>
  <Preview></Preview>
</Response>
```

JSON response:

```
{
  "Response": {
    "Status": "OK",
    "Message": "",
    "Preview": ""
  }
}
```

- If a request doesn't contain a request body in XML or JSON an error is returned in plain text with no formatting.
- Preview functionality is only supported when using HTTP.





Americas

+1 262 784 2456

[sales.americas@nicelabel.com](mailto:sales.americas@nicelabel.com)

EMEA

+386 4280 5000

[sales@nicelabel.com](mailto:sales@nicelabel.com)

Germany

+49 6104 68 99 80

[sales@nicelabel.de](mailto:sales@nicelabel.de)

China

+86 21 6249 0371

[sales@nicelabel.cn](mailto:sales@nicelabel.cn)

---